

# CITYREALTY

---

NEW DEVELOPMENT OF THE DAY

## 720 West End Avenue

**Lovely Upper West Side homes near Riverside Park**

Landmarked **Emery Roth** building meets **Thomas Juul-Hansen** interiors

**Occupancy Early 2025 | 30,000 SF of amenities**



Originally built as the Hotel Marcy during the height of the Jazz Age in 1927, **720 West End Avenue** is a quintessential Upper West Side building designed by the renowned architect **Emery Roth**. In its latest chapter, the landmarked brick and

limestone facade has been meticulously restored, while **Thomas Juul-Hansen** has sharpened 131 gracious condominium residences inside.

Each home features a neutral palette with hand-selected materials, including light-washed woods, honed metals, and polished stone, designed to enhance natural light. Custom Boffi kitchens serve as functional and inviting central spaces, while five-fixture primary baths feature Volakas marble counters, flooring and walls, waterworks fixtures, radiant heated flooring, and a Toto wall mounted toilet.



View west from 720 West End Avenue of Riverside Park and the Hudson River

The 16-story gem is located at the northwest corner of 95th Street, in the **West End Historic District** near the Joan of Arc monument, Dinosaur Playground, and 96th Street tennis courts in Riverside Park. Nearby conveniences include Symphony Space, Broadway shopping and dining, Trader Joe's, and the 96th Street 1/2/3 trains. For those who choose to drive, the building has superior access to the West Side Highway.

Sales at 720 West End Avenue launched in 2024 with one- to five-bedroom homes priced **from \$995K**. Nearby new development condos include [96+Broadway](#), [The Westly](#), [2505 Broadway](#), [The Rockwell](#), and [Claremont Hall](#).

[LEARN MORE](#)



## 720 West End Avenue, #PH17B

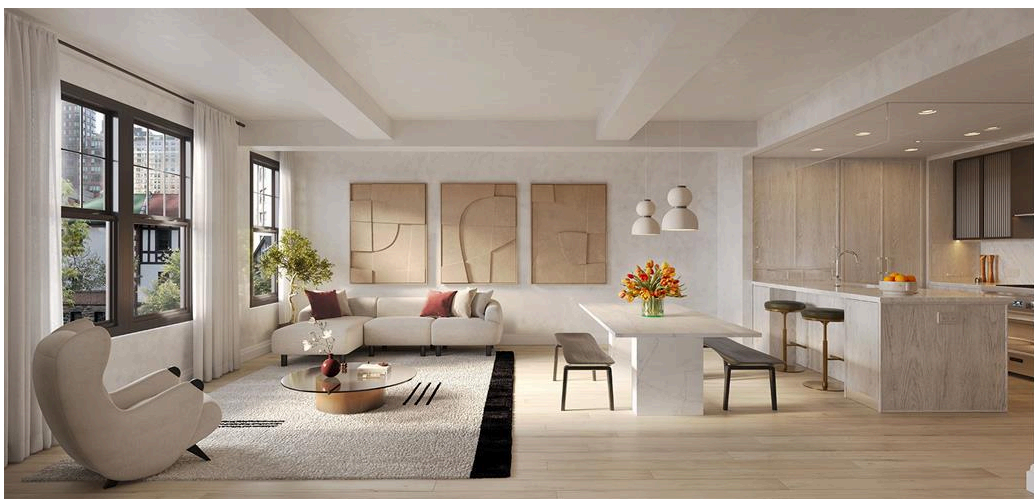
Condo in [Riverside Drive/West End Avenue](#)

**\$11,600,000**

5 beds, 5.5 baths | 3,493 ft<sup>2</sup>

A grand entrance foyer welcomes one to **Penthouse #17B**, a sprawling corner residence with access to a 1,450-square-foot private terrace overlooking the Hudson River. The heart of the home is a Great Room with a gas fireplace. The eat-in kitchen by Boffi can be closed off if desired. The secluded bedroom wing offers complete privacy.

[VIEW LISTING](#)



## 720 West End Avenue, #11F

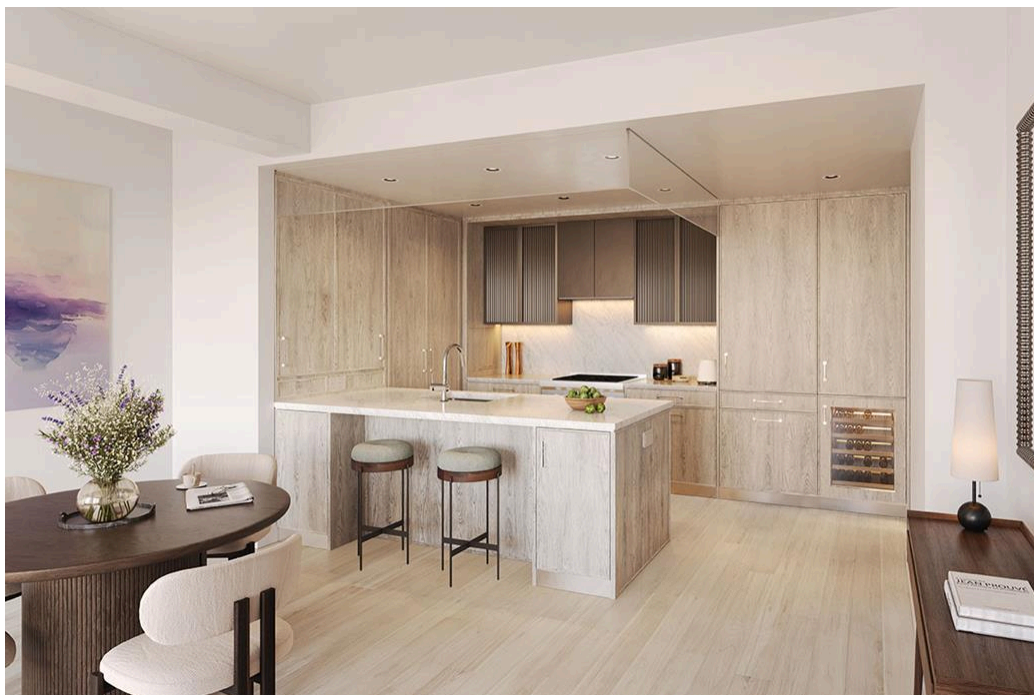
Condo in [Riverside Drive/West End Avenue](#)

**\$2,945,000**

2 beds, 2.5 baths | 1,481 ft<sup>2</sup>

**Residence #11F** is a south-facing two-bedroom overlooking the treetops of the Upper West Side. The Great Room flows effortlessly into a custom Italian kitchen by Boffi with a hand selected honed Namibia Rose marble countertop and backsplash, white oak cabinetry, and professional-grade appliances. The primary suite boasts two oversized closets and a five-fixture bath.

[VIEW LISTING](#)



**720 West End Avenue, #6L**

Condo in [Riverside Drive/West End Avenue](#)

**\$1,015,00**

1 bed, 1 bath | 637 ft<sup>2</sup>

**Residence #6L** is a spacious one-bedroom facing north over the building's tranquil landscaped terrace. The home has a custom Italian kitchen by Boffi featuring a hand selected honed Namibia Rose marble countertop and backsplash, white oak cabinetry, fluted, reflective bronze upper doors and Waterworks polished chrome hardware.

Professional-grade appliances include Sub-Zero refrigerator, Wolf cooktop and oven, Wolf speed oven, Sub-Zero wine fridge, and Cove dishwasher. **No expense has been spared.**

[VIEW LISTING](#)





# 720 WEST END

## RESIDENCES 8-10B

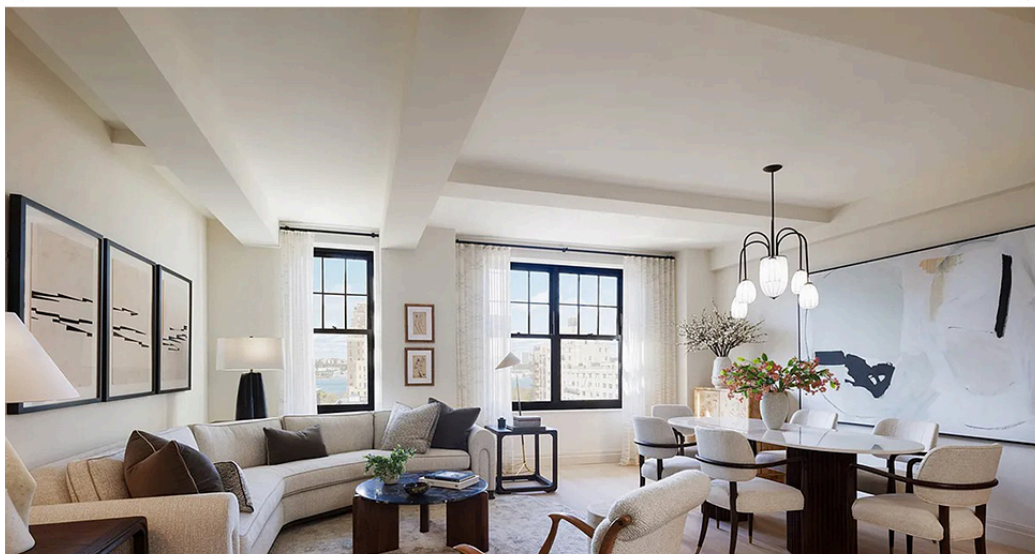
2 Bedrooms  
2 Baths  
Powder Room

**INTERIOR**  
1,667 Sf / 154.9 Sm  
Exposure: West

**CONTACT**  
720 West End Ave  
New York, NY 10025  
720WestEnd.com  
212-914-7720



RESIDENCES 8 - 10B





## 720 West End Avenue, #9B

Condo in [Riverside Drive/West End Avenue](#)

**\$3,525,000**

2 beds, 2.5 baths | 1,667 ft<sup>2</sup>

Upon arriving at **Residence #9B**, a gracious foyer with a powder room and two closets leads to an open living/dining area facing west with Hudson River views. An extra-large pantry/home office space is adjacent to the custom Boffi kitchen. Both bedrooms have en suite baths, and the primary suite boasts an oversized closet.

[VIEW LISTING](#)



## 720 West End Avenue, #8C

Condo in [Riverside Drive/West End Avenue](#)

**\$4,600,000**

3 beds, 3.5 baths | 2,045 ft<sup>2</sup>

**Residence #8C** is a corner three-bedroom unit facing south and west with views of the Hudson River and classic Upper West Side architecture. The large, open living/dining area flows seamlessly into an open kitchen with honed Namibia Rose marble countertop and backsplash, white oak cabinetry, and a suite of professional-grade appliances.

[VIEW LISTING](#)

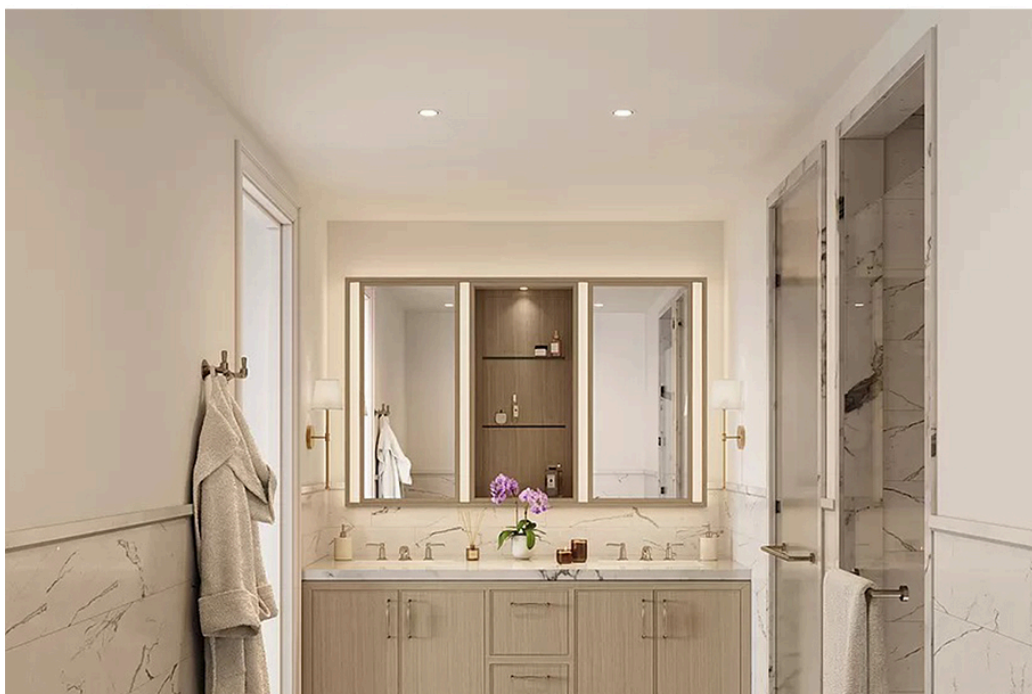
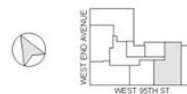
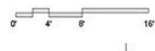




**720 West End Avenue**  
New York, NY 10025  
62/29/24

**UNIT 14H**  
**4 BED, 3.5 BATH**  
**2680 SF**

468





## 720 West End Avenue, #14H

Condo in [Riverside Drive/West End Avenue](#)

**\$6,850,000**

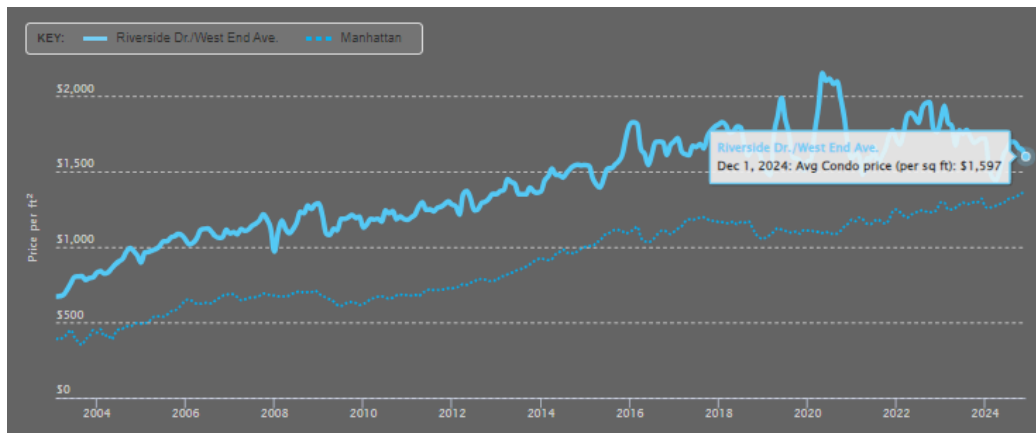
4 beds, 3.5 baths | 2,649 ft<sup>2</sup>

High-floor **Residence #14H** enjoys incredible light and views through triple exposures facing south, east, and north. A spacious mudroom can be found adjacent to the entrance foyer leading to the open living/dining room and custom kitchen. The primary suite has three oversized closets and a five-fixture bath with Volakas marble counters, flooring and walls.

[VIEW LISTING](#)



Unit #	Beds	Baths	Size	Price / Ft <sup>2</sup>	Price	Listed on
<a href="#">Apt. 6L</a> <small>(16 Photos)</small>	1 bed	1 bath	637 ft <sup>2</sup>	\$1,593	\$1,015,000	Nov 21, 2024
<a href="#">Apt. 6C</a> <small>(16 Photos)</small>	1 bed	1 bath	729 ft <sup>2</sup>	\$1,756	\$1,280,000	Nov 7, 2024
<a href="#">Apt. PH17B</a> <small>(21 Photos)</small>	5 beds	5.5 baths	3,493 ft <sup>2</sup>	\$3,321	\$11,600,000	Oct 15, 2024
<a href="#">Apt. 11F</a> <small>(16 Photos)</small>	2 beds	2.5 baths	1,481 ft <sup>2</sup>	\$1,989	\$2,945,000	Sep 11, 2024
<a href="#">Apt. 5H</a> <small>(16 Photos)</small>	2 beds	2.5 baths	1,475 ft <sup>2</sup>	\$1,851	\$2,730,000	Sep 11, 2024
<a href="#">Apt. 3F</a> <small>(16 Photos)</small>	1 bed	1.5 baths	827 ft <sup>2</sup>	\$1,784	\$1,475,000	Sep 11, 2024
<a href="#">Apt. 2E</a> <small>(16 Photos)</small>	3 beds	3.5 baths	1,873 ft <sup>2</sup>	\$1,599	\$2,995,000	Jul 17, 2024
<a href="#">Apt. 14H</a> <small>(16 Photos)</small>	4 beds	3.5 baths	2,649 ft <sup>2</sup>	\$2,586	\$6,850,000	Jul 17, 2024
<a href="#">Apt. 10A</a> <small>(31 Photos)</small>	4 beds	4.5 baths	2,796 ft <sup>2</sup>	\$2,378	\$6,650,000	Jul 17, 2024
<a href="#">Apt. 12C</a> <small>(17 Photos)</small>	4 beds	4.5 baths	2,348 ft <sup>2</sup>	\$2,491	\$5,850,000	Jul 17, 2024
<a href="#">Apt. 12B</a> <small>(17 Photos)</small>	3 beds	3.5 baths	2,163 ft <sup>2</sup>	\$2,416	\$5,225,000	Jul 17, 2024





*State-of-the-art fitness center with yoga and Pilates studios*



*Basketball/squash court*

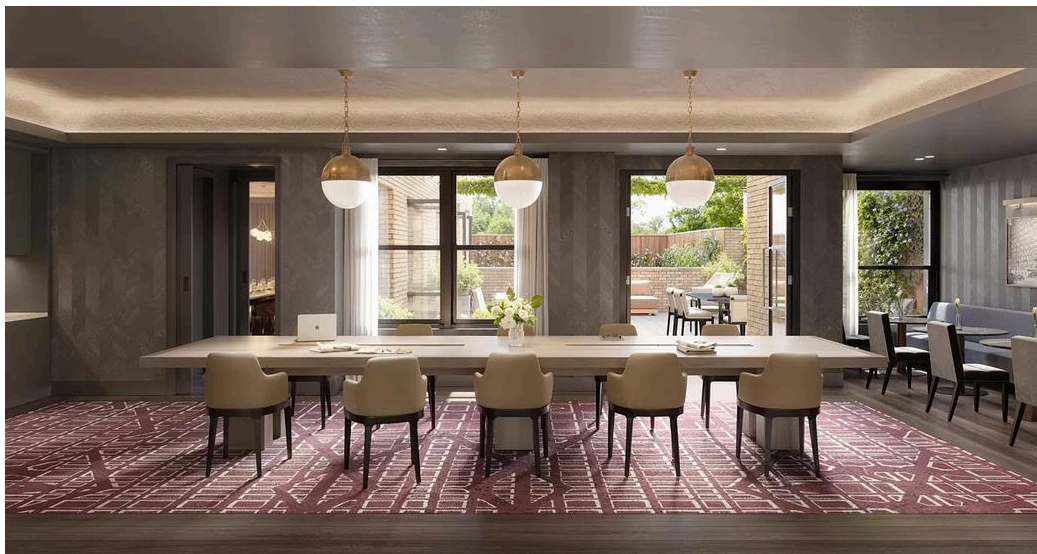




*Children's playroom + Maker's studio*

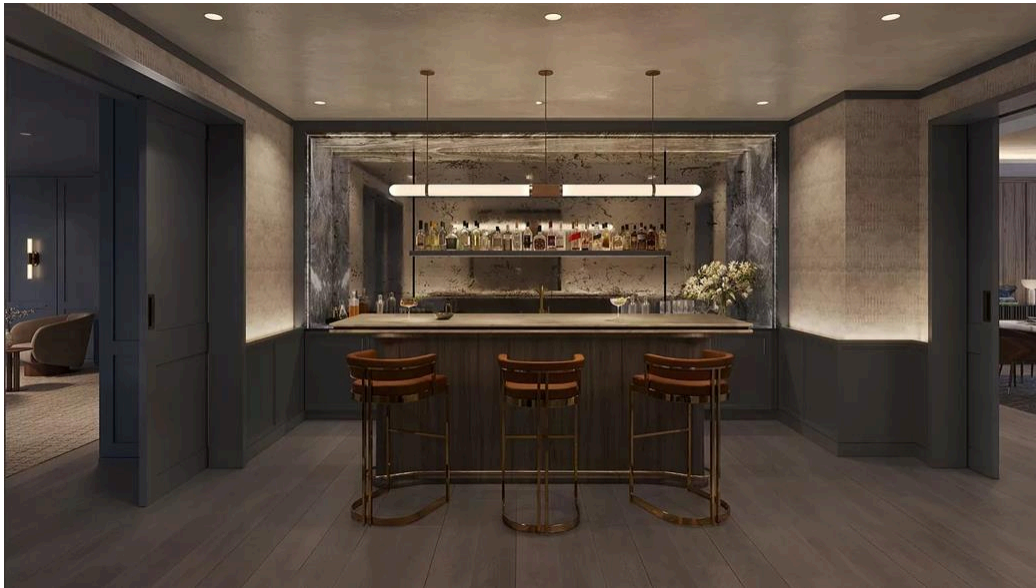


*Game room with a sports simulator*

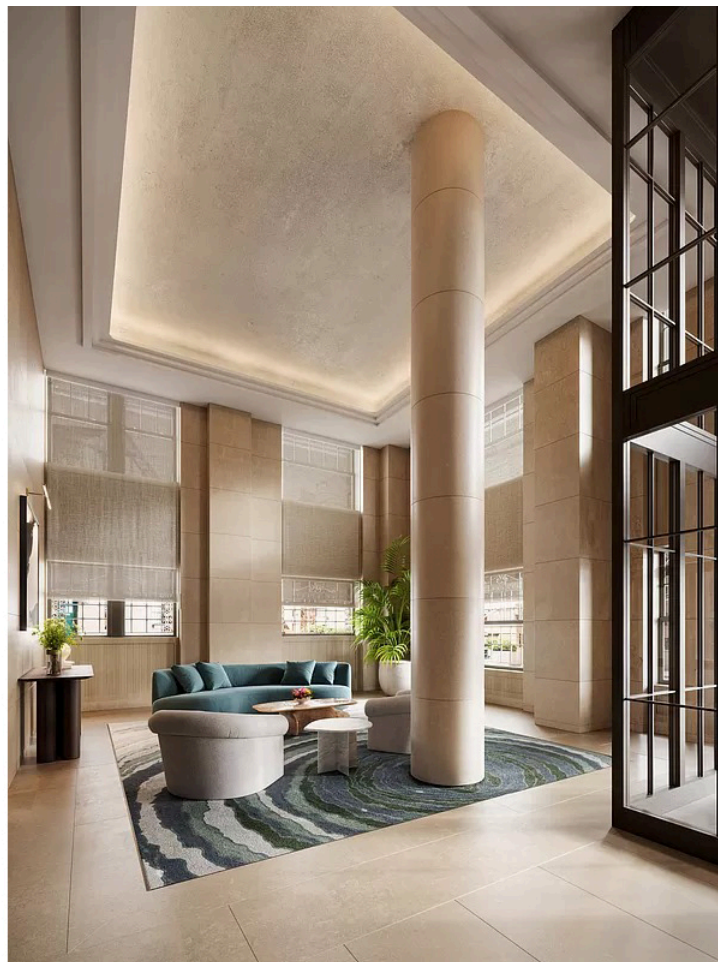


*Private dining room with a catering kitchen*

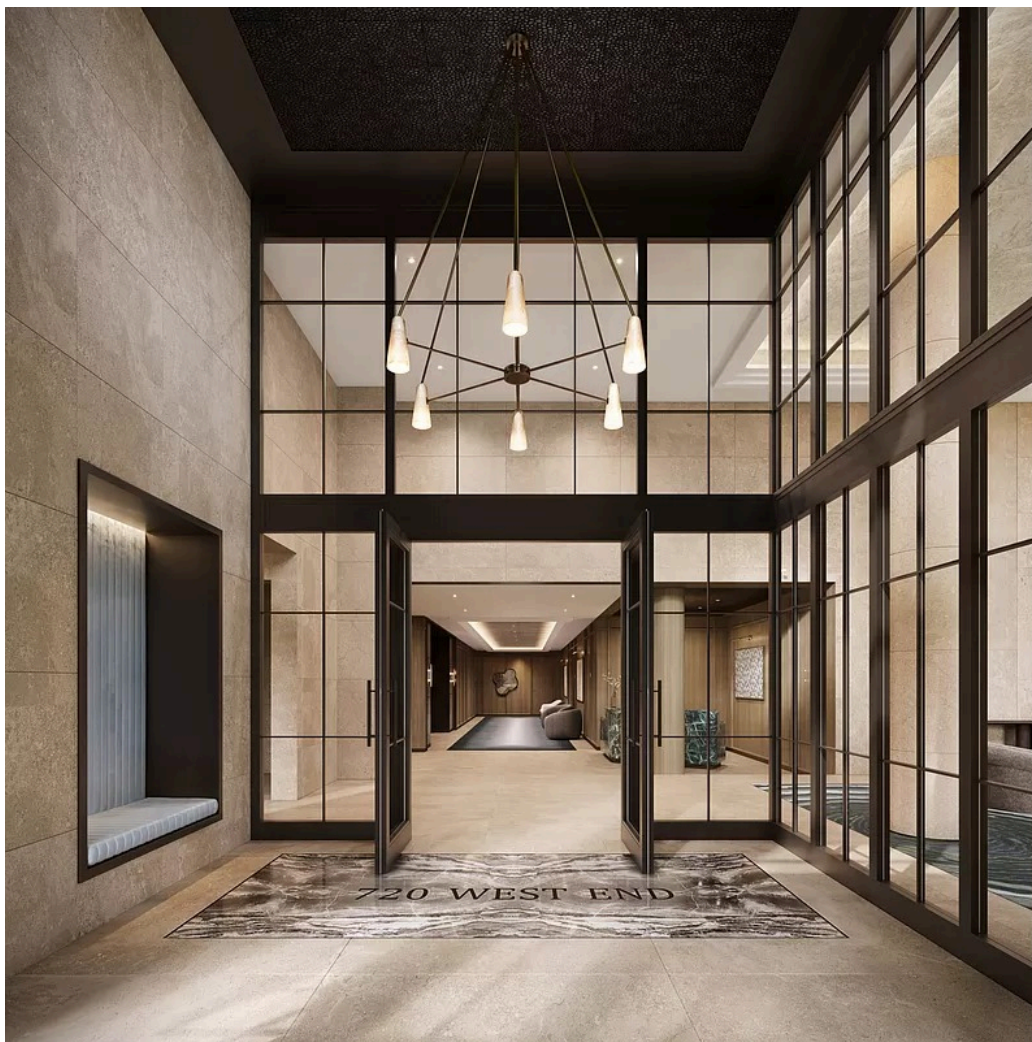




*Private bar*



*Double-height lobby with 24-hour doorman and concierge*



*Primary entrance vestibule*



*In-building private parking*

Residents of 720 West End Avenue have access to **30,000 square feet of amenities**, including a fitness center with yoga and Pilates studios, a basketball/squash court, and a library with coworking space. Additional features include a private dining room with a catering kitchen, a bar, a children's playroom, a game room with a sports simulator, a maker's studio, and outdoor terraces and courtyards.

The building also offers 24-hour doorman and concierge services, a pet spa, bike storage, and **on-site private parking**.

**Address:** 720 West End Avenue, Upper West Side

**Architect:** Emery Roth (original) Thomas Juul Hansen (conversion)

**Developer:** Glacier Equities and InterVest Capital Partners

**Total Number of Units:** 130

**Occupancy:** Q4 2024

**Current Asking PPSF:** \$2,180

**Asking Prices:** \$975K - \$11.85M

**1-Bed Starting Price:** \$975K

**2-Bed Starting Price:** \$2.1M

**3-Bed Starting Price:** \$2.995M

*Reach out to CityRealty for free consultation about NYC home search*

**Schedule an appointment to tour 720 West End Avenue today.**

**Call us at (212) 755-5544**

**Email us at [info@CityRealty.com](mailto:info@CityRealty.com)**





- [Matchless Elegance: Homes in buildings designed by Emery Roth, NYC's greatest residential architect](#)
- [The best 25 NYC apartment buildings with indoor squash courts](#)
- [Cold feet no more: 20 new development condos with radiant heated floors](#)
- [New development condos with indoor/outdoor fitness areas](#)
- [Upper West Side New Development Round-Up](#)



Copyright © 2024 CityRealty.com LLC. All Rights Reserved.  
450 Seventh Avenue, 39th Floor, New York, NY, 10123 United States

All information furnished regarding property for sale, rental or financing are from sources deemed reliable, but no warranty or representation is made to the accuracy thereof. Such information may contain errors or omissions, may be subject to change of price, rental or other conditions, prior to sale, lease or financing or withdrawal without notice. All dimensions are approximate. This is not an offering, the complete offering terms are in an Offering Plan available from the sponsor.

All mortgage rates, points and products are subject to change at any time without prior notice.

Why did I get this?

[View our Privacy Policy](#) | [Unsubscribe](#)